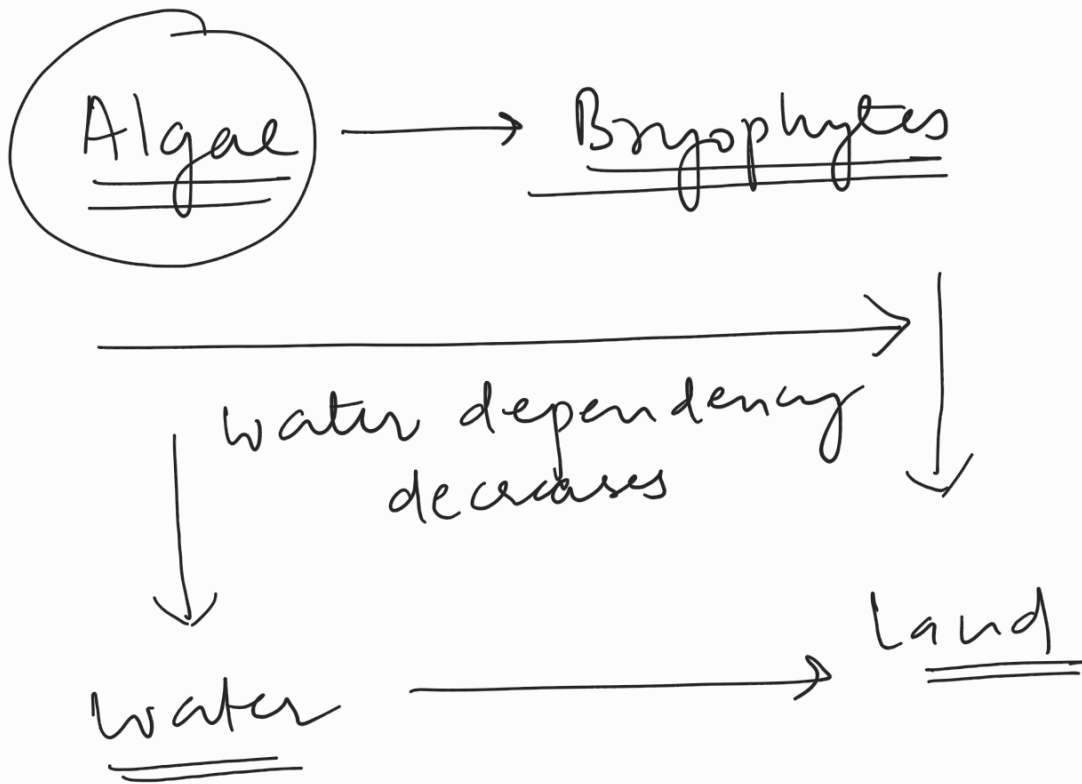
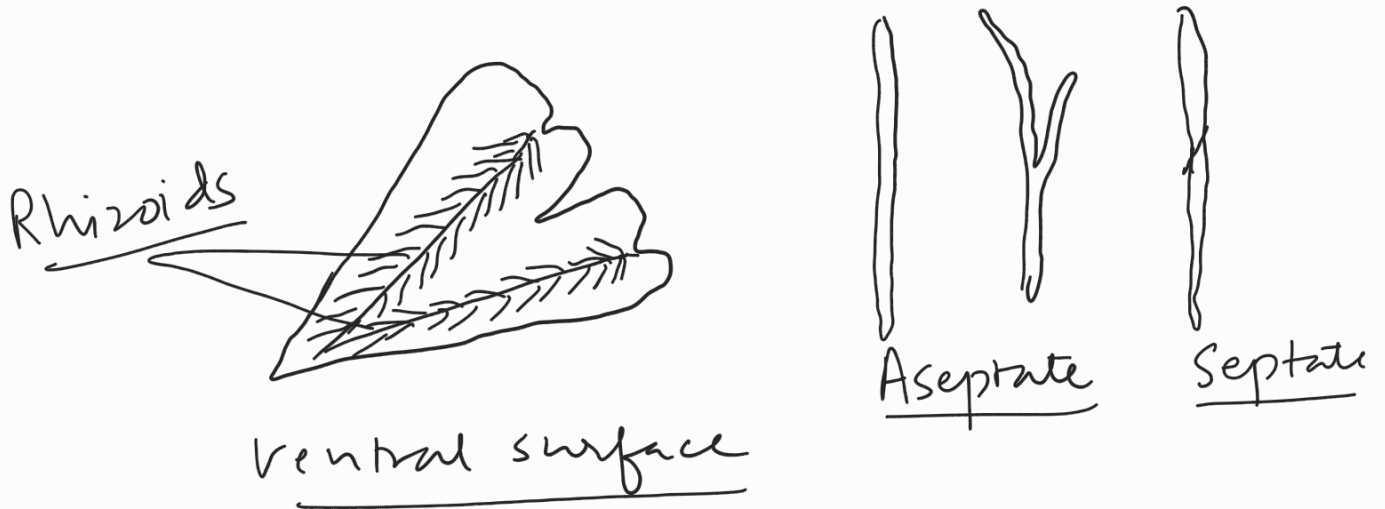


Introduction to Bryophytes



- ✓ Also called Amphibians of plant Kingdom.
- ✓ live in moist, shady areas
- ✓ Plant body of bryophytes is more differentiated than algae.
- ✓ Bryophytes are thalloid i.e. they lack true root, stem, leaves.

- For fixation to substratum, rhizoids are present.



- Dominant/Conspicuous phase is gametophyte.

↳ (plant body that produces gametes & is generally haploid)

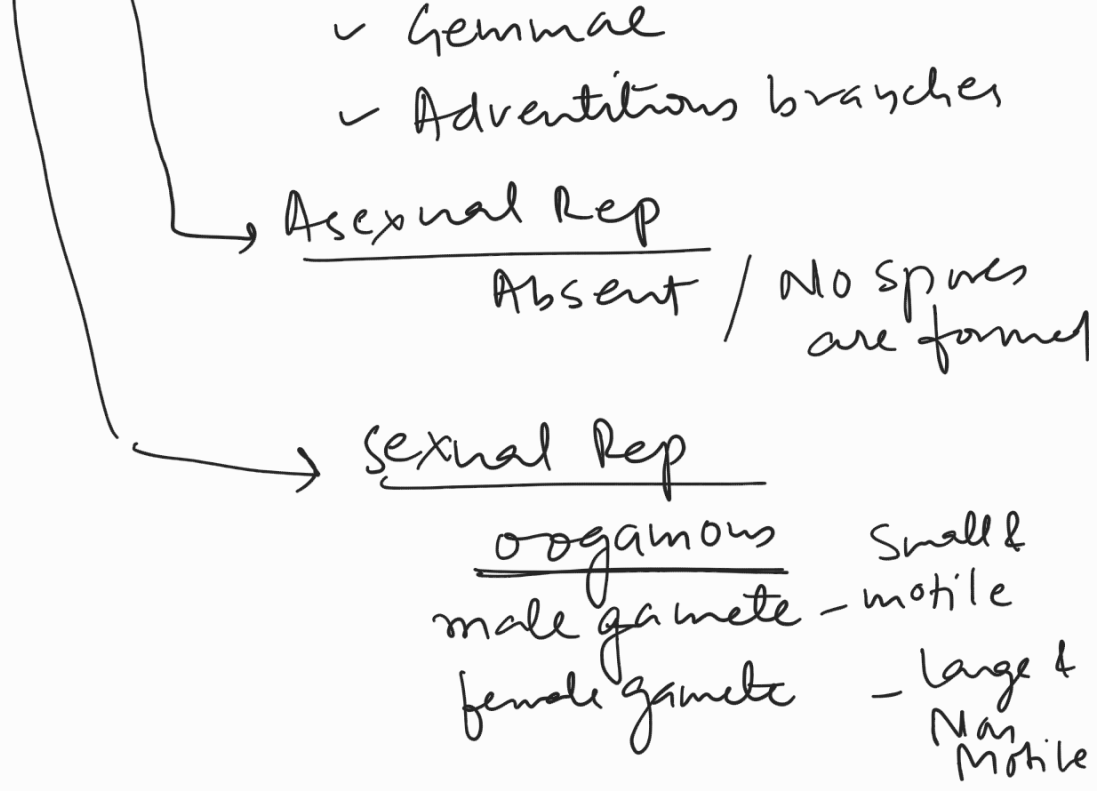
Q: Main plant body in Bryophytes is _____?

Ans: Gametophytic

- Reproduction

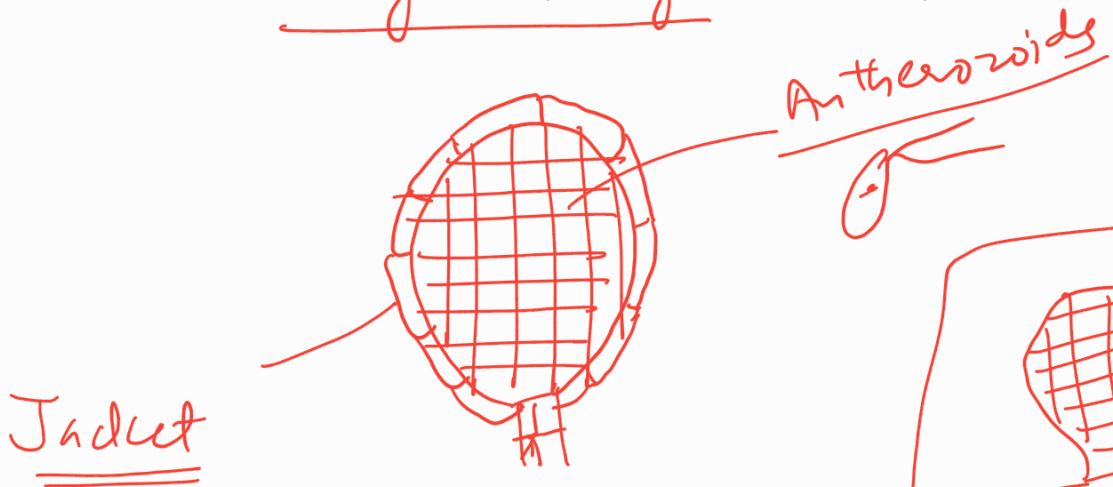
↳ vegetative

- ✓ Fragmentation
- ✓ Tubers



— Gametangium are jacketed

↳ Male gametangium - Antheridium



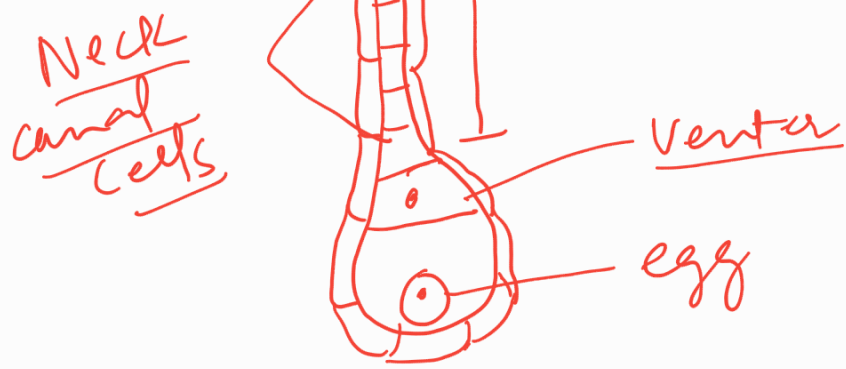
Antheridium



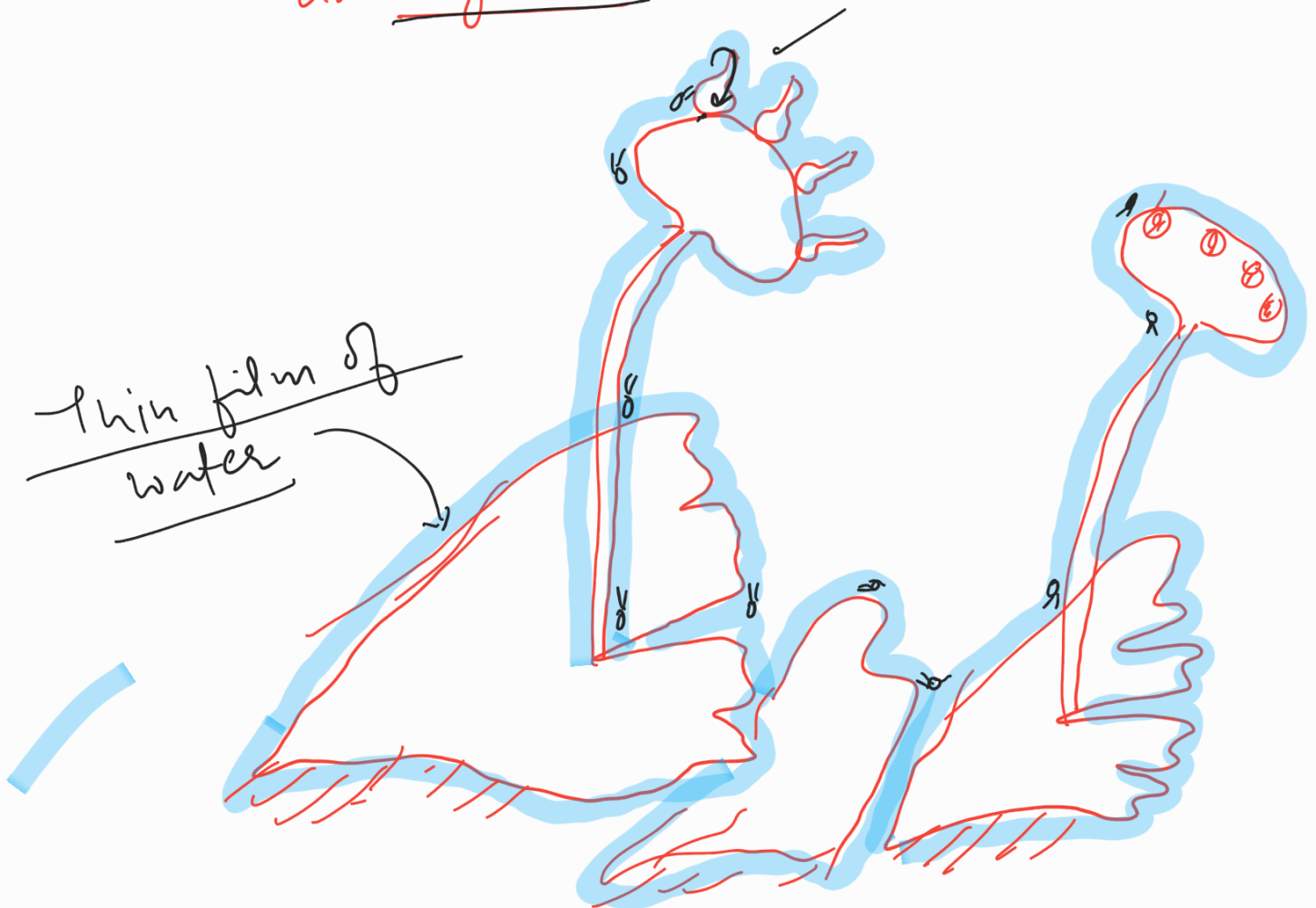
Female Gametangium

Archegonium Lid cell





— Sexual reproduction requires water as antherozoids have to swim in thin film of water over gametophytic plant body to reach female gametangium i.e. archegonium

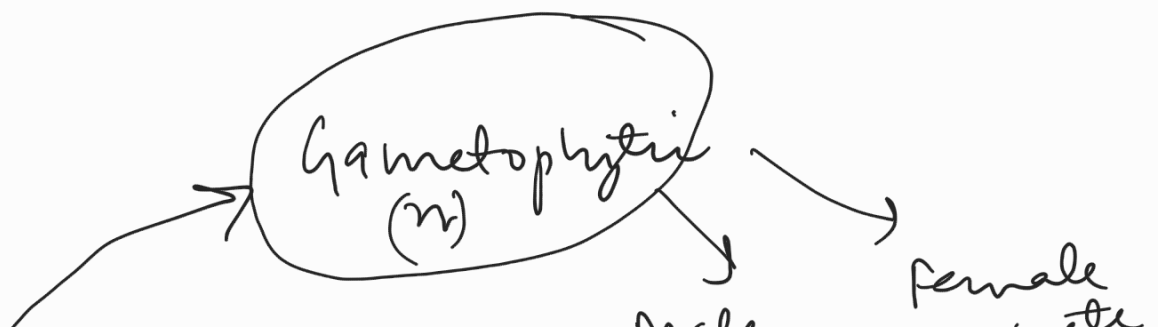
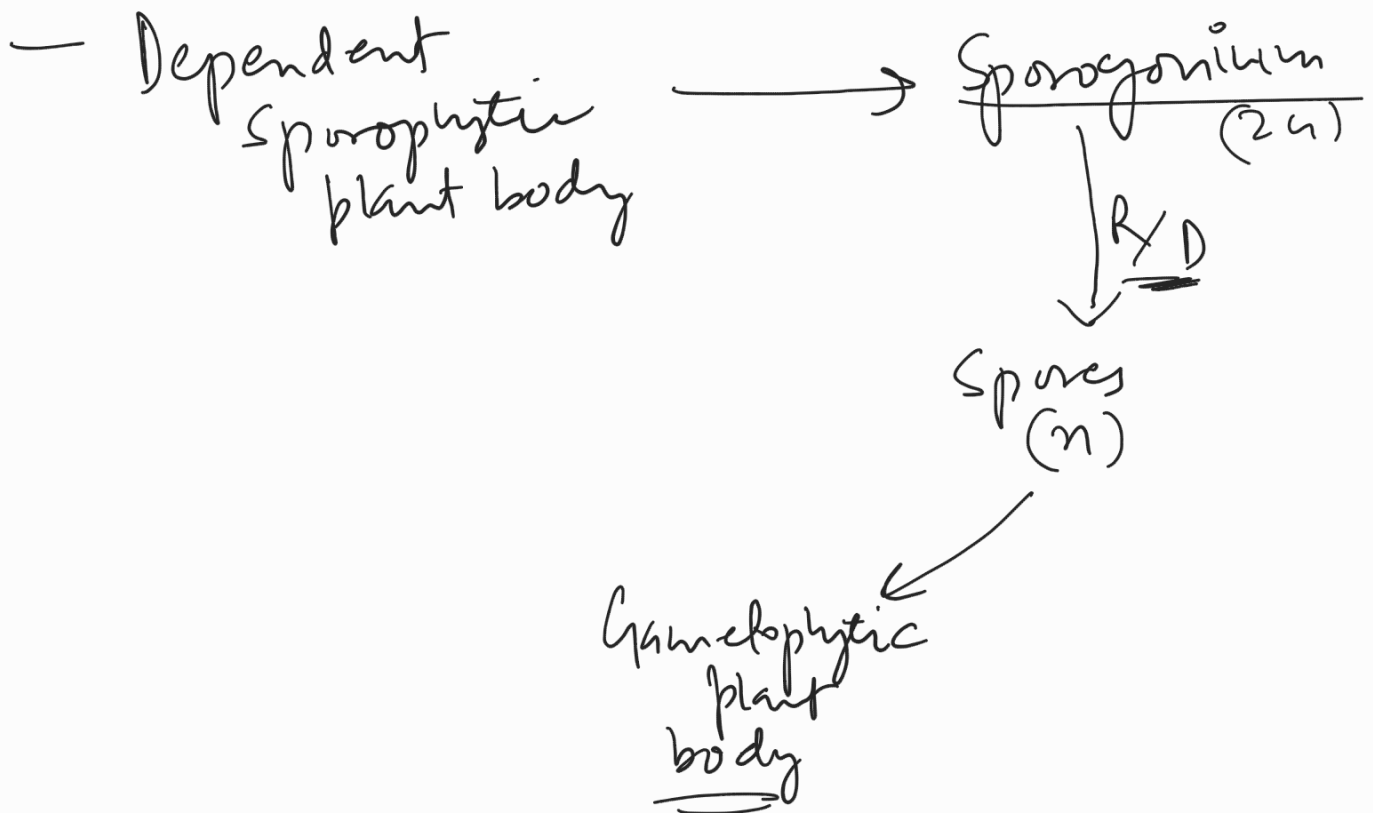


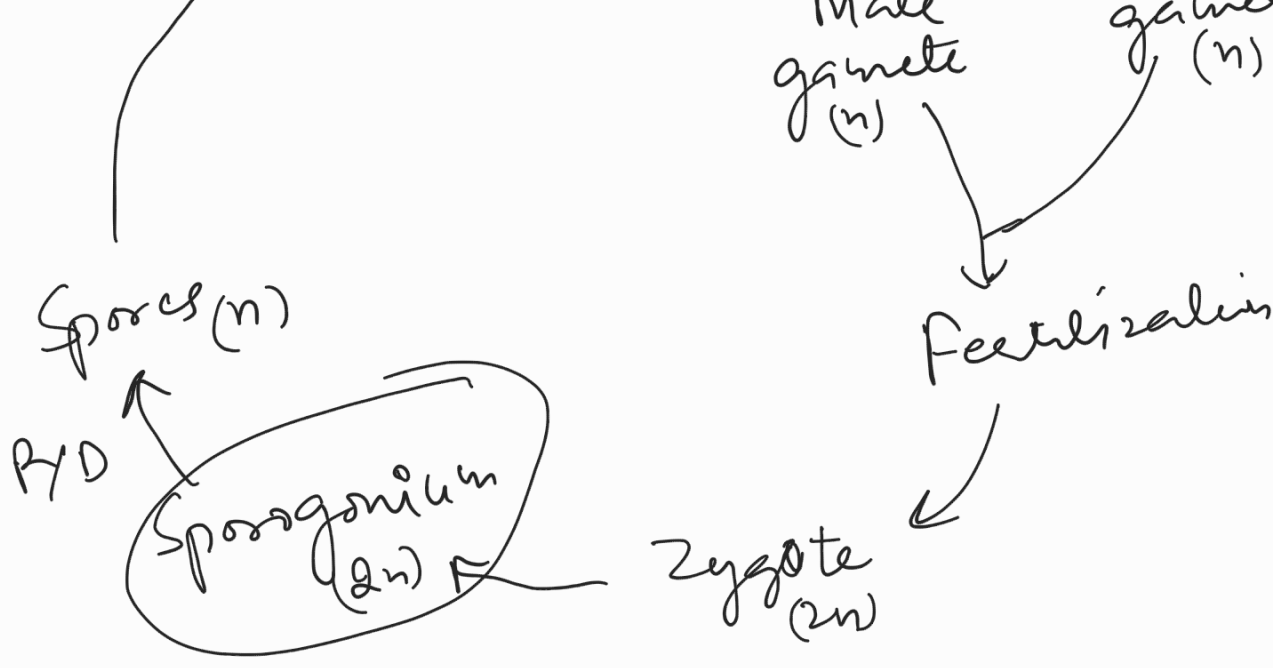
— Fertilisation

↳ zygote ($2n$)

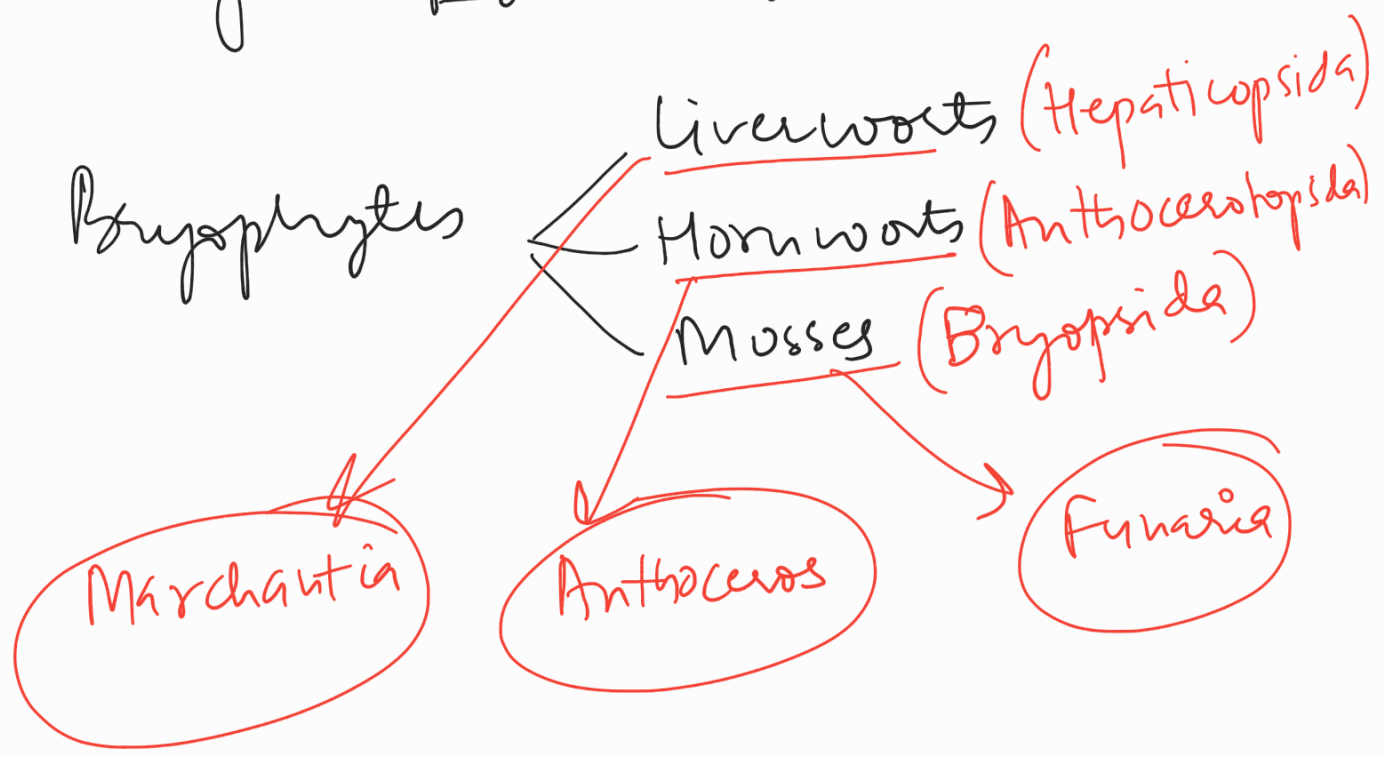
↓
Sporophytic body
(2n)

But, this sporophytic body is either fully or partially dependent upon gametophyte parent body. Hence, it is called Sporogonium instead of sporophytic plant body.





Alternation of generations b/w gametophyte & sporogonium.



Compiled By:

Dr. Sonia

Dept of Botany

GKSM Govt college, Tanda

